

# A10

**Specification:**

The Irinox **Model A10 Blast Chiller/Shock Freezer** shall have the following characteristics: (12) 5-liter gelato pans; two standard chilling modes, and core product temperature probe, plus all the features listed and the options or accessories checked.

Sizing & Unit Production Guide:		A10
Pan Capacity	up to (12) 5-liter gelato pans	
Blast Chilling Capacity [194° to 37° F]*	55 lbs.	
Shock Freezing Capacity [194° to 0° F]*	33 lbs.	

\* Per production cycle



Item No.	_____
Qty.	_____
Project	_____
	_____
	_____
	_____
	_____
	_____

**Standard Construction Features:**

- All Type 304 stainless steel construction
- CFC-free high-density polyurethane insulation
- Full-width door with replaceable magnetic gasket
- Ergonomic easy-grab door handle
- Removable stainless steel pan supports
- Ergonomic product core temperature probe with insulated cable
- Integrated single compressor and condenser
- Approved R404A refrigerant used in sealed system
- Front access door for easy condenser cleaning
- Water & smudge-resistant touch pad controls
- 4" stainless steel height-adjustable legs
- Door hinged left
- At the end of any cycle the unit will go into hold mode

**Product Warranty Protection**

- 1 year, parts & labor
- 5 years on compressor

**Unique Performance Features:**

- Indirect air flow-ventilation reduces product moisture loss
- Chilling compartment has coved corners for uniform air movement and easier cleaning
- Special fan design speeds product chilling
- Choice of two product chilling modes:

**Operating Mode Performance & Applications:**

Operating Modes:	Temperature Δ [F]*	Time	Minimum Air Temp. Used [F]	Product Applications
Blast Chill	194° to 37°	90 minutes	23°	Ice cream and Gelato
Shock Freeze	to 0°	4 hours	-31° to -40°	Ice cream and Gelato

\* Core product temperature

**Reach-In Blast Chiller/Shock Freezer Model: A10**

**Standard A Series Controls:**

- Power ON-OFF
- Two Operating Modes
- Chilling cycle START-STOP
- Chill-by-time or to core temperature
- Compartment Air & Core Temperature continuous displays

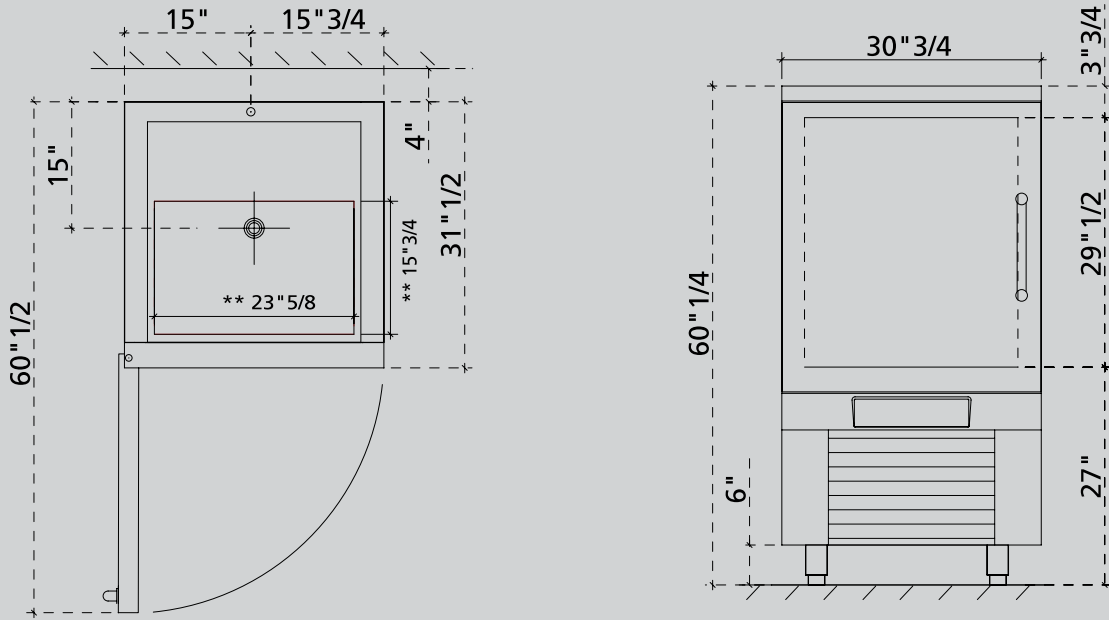
**Options & Accessories [Please Check]:**

- Probe holder for liquids [centers probe in pan or container]
- Door hinged right, opens right [Hinged left std.]
- 4" Swivel casters, two locking
- Additional \_\_\_\_\_ stainless steel shelves [4 shelves standard]



IRINOX USA 50 Oliver Street, Suite W1, North Easton, MA 02356  
 Phone: 508-230-5818 Fax: 508-230-5819 www.irinox.com

# A10



\*\* Max available space

### Equipment Dimensions & Weight

Width	30 3/4"
Depth	31 1/2"
Height w/Legs	60 1/4"
Height w/4" Casters	61 1/2"
Weight	400 lbs.

### Key Refrigeration System Data

Compressor Rating	1.5 HP
Refrigeration Yield*	14,240 BTU/HR
Integrated Condenser	Standard
Refrigerant Type	R404A

\*(Evap + 14°F / Cond +104°F)

### [E] Electric Data/Power Requirements

	KW	HP	AMPS
208 Volt – 3-Phase*	3.4	4.6	10

\* NEMA plug L15-20 supplied



Continued product development may necessitate specification changes without notice.



IRINOX USA 50 Oliver Street, Suite W1, North Easton, MA 02356  
Phone: 508-230-5818 Fax: 508-230-5819 www.irinox.com